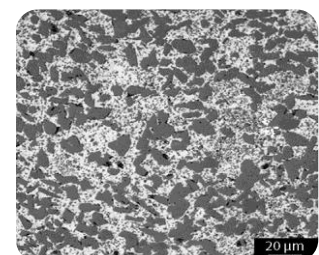
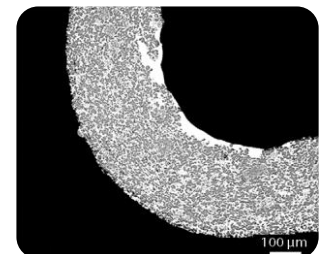
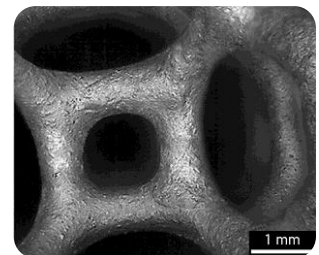
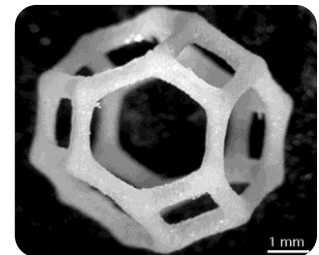




Material Data Sheet: SiSiC

Material Type Color		SiSiC (Si-Infiltr.) Bulk Gray
Microstructure Density Porosity Gas Permeability Water Absorption	[g/cm ³] [Vol.%] [Vol.%] [Vol.%]	2.8 0 0 0
Mechanical Properties Compressive Strength Flexural Strength @ 20°C Young's Modulus Hardness Vickers	[MPa] [MPa] [MPa] [GPa]	1250 210 270 16
Thermal Properties Maximum Temperature Air Inert Gas Thermal Conductivity @ 20°C @ 200°C @ 500°C @ 1000°C @ 1500°C Thermal Expansion Coefficient	[°C] [°C] [W/mK] [W/mK] [W/mK] [W/mK] [W/mK] [W/mK] [μm/mK]	1400 1400 110 85 60 42 38 4.8



All indicators are to be considered as mean values.

SiSiC coating example.